

Colorific Tree

Practice creating images with a variety of blended colors in pencil



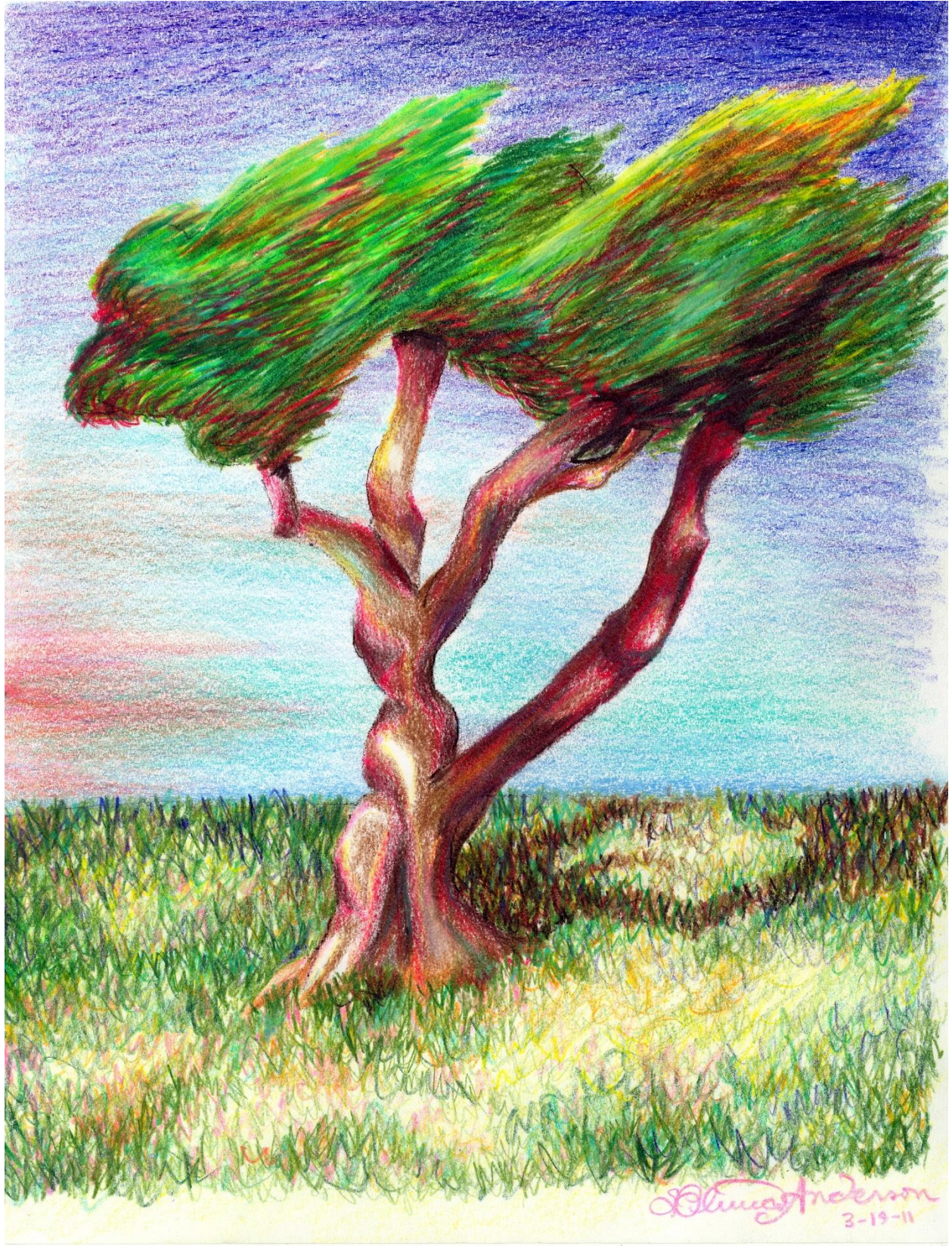
- 1) Use the faded “base” tree template as a place to start
- 2) Blend a variety of colors together on the trunk to create:
 - a. **Dimension** (bumps, crevices, overlapping branches, etc)
 - b. **Depth** (highlights and shadows)
 - c. **Visual Interest** (create your own branches, add to the trunk, and choose a style of leaves to include
- 3) Create leaves or Foliage – what kind of foliage is up to you
 - a. Green, dark green, yellow, red, etc. Mix the colors up.
- 4) Grass or ground – You do NOT have to fill the entire page
 - a. Include grass that has at least three colors blended
 - b. Include a cast shadow from the tree on the ground

Grading Points – 40 pts formative – 10 pts each section

- | | |
|--------------------------------------------|-----------------------------------|
| a) Overall Intensity and Variety of colors | b) Trunk blended |
| b) Leaves blended | c) Grass blended with Cast Shadow |







Blanca Anderson
3-19-11



