

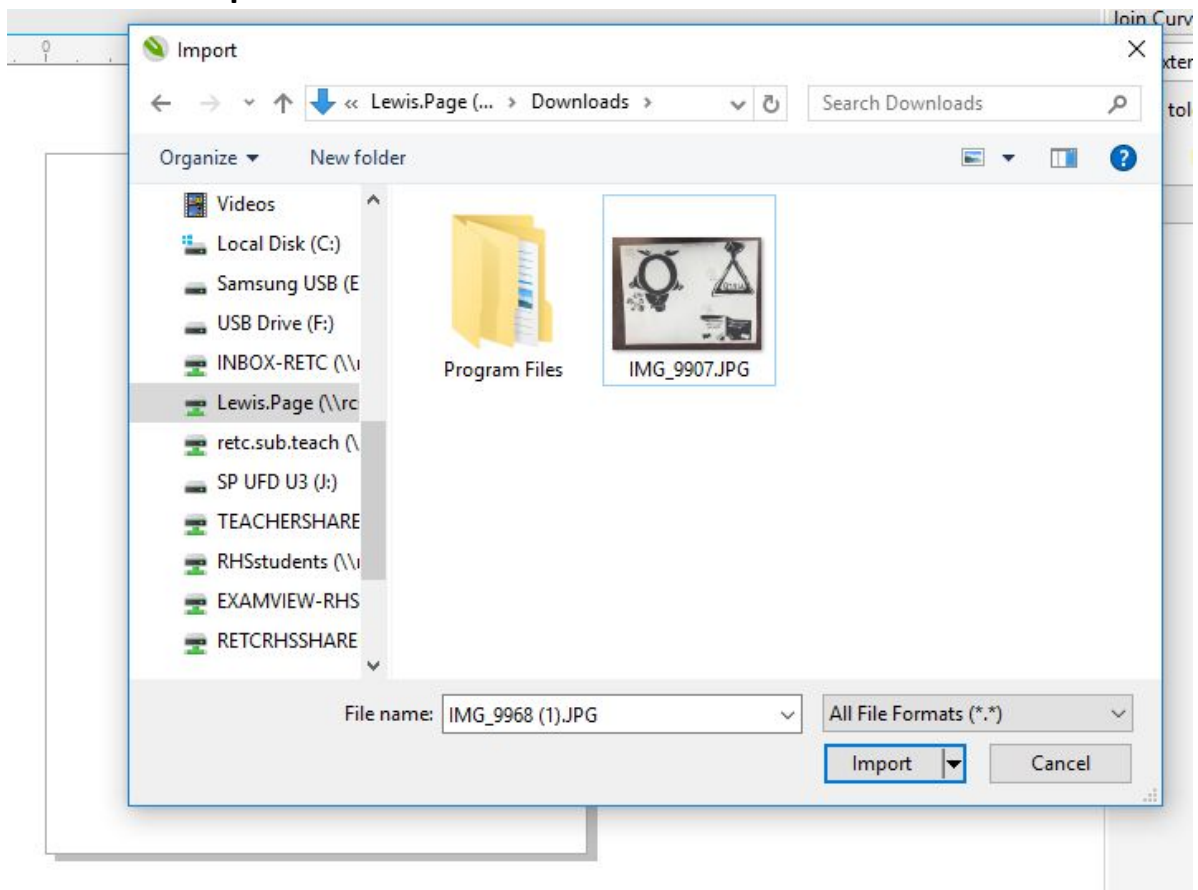
Vectorizing Hand-Made Images

The design process usually proceeds from:

An idea > to a sketch > to a prototype rendering > to a digital image > to a re-vamped and finalized digital version(s) of that image.

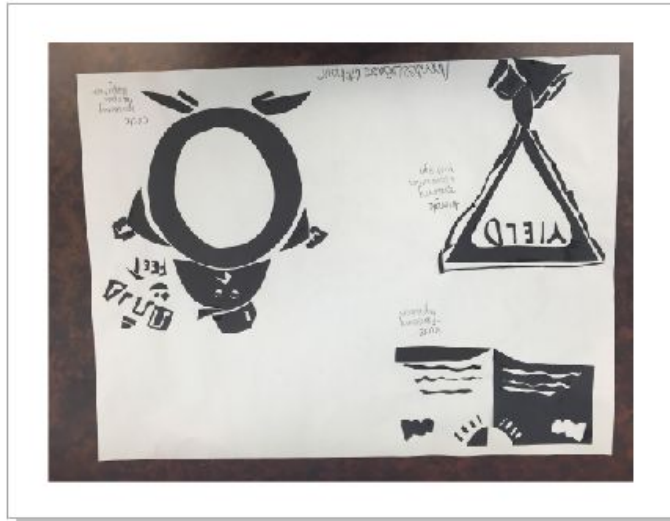
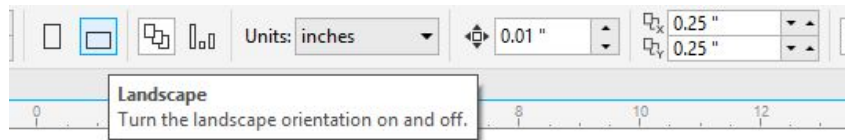
Practice this using your **Negative Space Designs**

- 1) Access the shared drive folder via link at **Inbox > Negative Space Work**
- 2) Open Corel Draw. Create a new blank page.
- 3) Go to **File > Import** and browse to the folder.



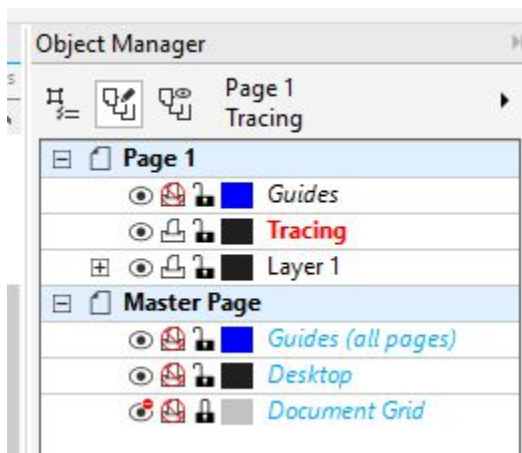
- 4) Drag a box to create the size of the of your image.

5) Switch the page orientation to **Landscape**.



6) If your picture is upside down, simply click on it, then use the **Mirror Vertically** and **Mirror Horizontally** buttons to orient it properly.

7) Create a new layer. Name it **Tracing**.



8) Unclick **Edit Across Layers**

- Use the drawing tools to accurately re-create your freehand designs. During this stage you are supposed to **CLEAN UP** or improve upon any imperfections (smoothing, etc)

FINALIZING

- When finished, tweak each individual logo. You may want to change it a little, or change it a lot. It depends on how well it came out.
- Pick a color for each of the separate drawings. Maximum of two colors for each logo. You may also play with the **OUTLINE** color (right click)
- Frame each logo design. Choose a shape that best fits the logo, and incorporate it into the final for each piece.

